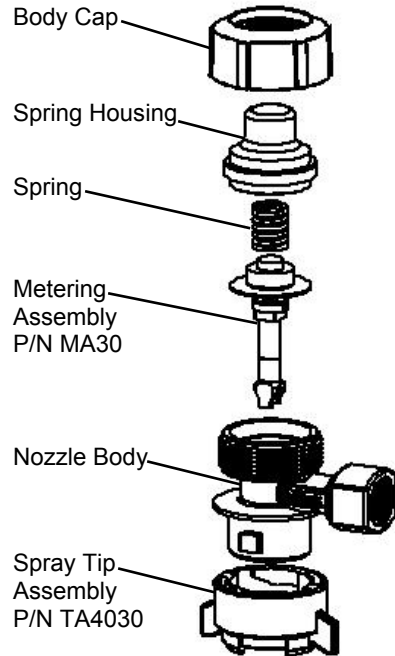


## Nozzle Repair Instruction



In the event the Spray Tip needs to be cleaned or replaced, or the Metering Assembly needs replacement, please follow these instructions:

1. Disconnect the nozzle from the spray boom
  2. If you are replacing just the Spray Tip Assembly refer to steps 5, 10, and 11. For Metering Assembly replacement continue with all steps.
  3. Remove Body Cap from the Main Body.
  4. The Spring Housing and Spring will come off the Main Body when the Body Cap is removed.
- NOTE:** Care should be taken to not lose or damage the Spring. If this should happen a new VariTarget nozzle would need to be ordered to insure proper operation.
5. Remove the Spray Tip Assembly from the Main Body.
  6. Push the Metering Assembly up out of the Main Body.
  7. Insert the new Metering Assembly into the Main Body oriented as shown.
  8. Set the Spring onto the Metering Assembly and place the Spring Housing over the Spring and secure with the Body Cap.
  9. Tighten the Body Cap until the Alignment Line on the side of the cap lines up with the raised marking rib on the side of the Main Body ( Fig. 1).
  10. Turn the nozzle over and align the Metering Assembly so that the V-Groove is in line with the two raised ribs on the bottom of the Main Body (Fig. 2).
- CAUTION:** Failure to correctly align the Metering Assembly before putting on the Spray Tip Assembly will cause **DAMAGE** to the the Metering Assembly and the Spray Tip Assembly.
11. Replace the Spray Tip Assembly onto the Main Body

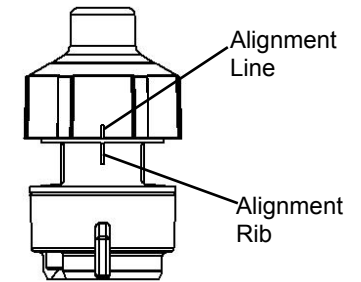


Fig. 1

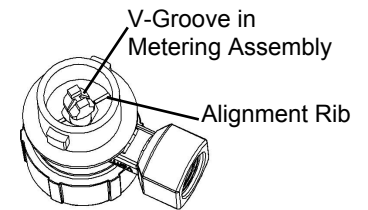


Fig. 2

## Spray Tip Replacement Instruction

1. Remove the old Spray Tip from the Main Body.
  2. Align the V-Groove in Metering Stem with the raised Alignment Rib on the Main Body by turning the Metering Stem by hand as shown in Fig. 1.
  3. Hold the new Spray Tip between your fingers and thumb on the Center Orifice as in Fig. 2, and apply pressure with the thumb to open the Inside Levers as shown in Fig. 3 and Fig. 4.
- CAUTION:** Failure to correctly align the Metering Stem will cause damage to the Metering Stem when the Spray Tip is installed resulting in improper operation of the nozzle.
4. Place the new Spray Tip on the Main Body while at the same time maintaining pressure on the Center Orifice until it is fully seated on the Metering Stem and the Main Body as shown in Fig. 5.
  5. Turn the Spray Tip until it stops.



Fig. 5

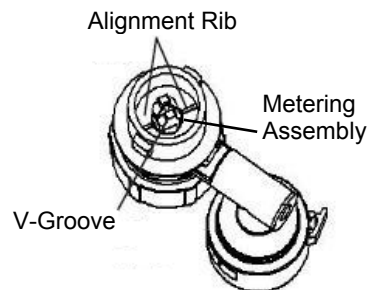
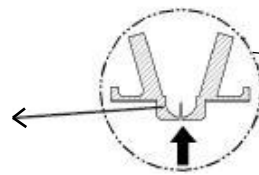


Fig. 1

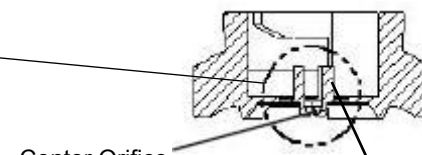


Fig. 2



Push up on Center Orifice with thumb causes Inside Levers to open for installation onto Main Body

Fig. 3



Center Orifice

Inside Levers in the uninstalled position

Fig. 4