



VeriFlow

Liquid Fertilizer Regulator with Flexible Orifices



VeriFlow1



VeriFlow2

ONE VERIFLOW REPLACES EIGHT
CONVENTIONAL ORIFICE PLATES

Flow Rate Controllable On the Go

Excellent For Subsurface or Above-Ground
Streaming Application of Varying Rates



AE50 Award Winner

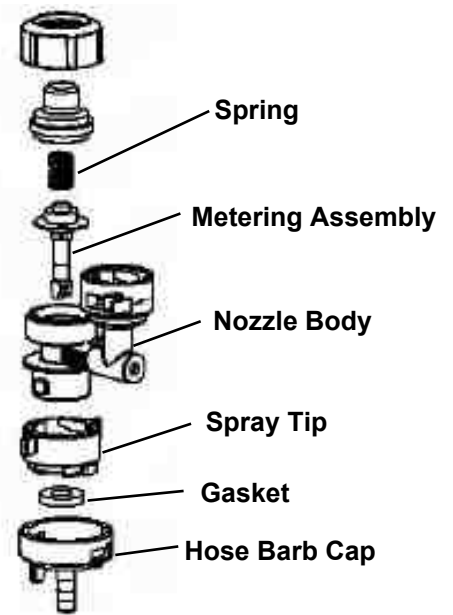
Ph: (651) 485-2410 Fax : (651) 344-3226 Website: www.spraytarget.com

VeriFlow

VeriFlow is a liquid regulator that is capable of controlling flow rate over an extended range of flow rates. The nozzle comprises a flexible metering orifice that is automatically and appropriately deformed by a flexible metering assembly in response to changes in liquid pressure.

Features

- Flow rate variable from .15 to 1.5 GPM (VeriFlow1) or 0.07 to 0.50 GPM (VeriFlow21)
- 1/4" or 3/8" hose barb or push-in connection
- Quick response to rate changes
- Compatible with GPS/ GIS
- Adaptable to conventional spraying systems
- Flexible and large orifices allowing significant reduction in nozzle plugging
- Excellent chemical and wear resistance



VeriFlow 1

Reference Pressure PSI	Nozzle Flow Rate GPM	20" Nozzle Spacing							
		US Gallons /Acre - Based on Fertilizer							
		4 MPH	6 MPH	8 MPH	10 MPH	12 MPH	14 MPH	16 MPH	20 MPH
16	0.15	9.5	6.3	4.7	3.8	3.2	2.7	2.4	1.9
20	0.20	12.6	8.4	6.3	5.9	4.2	3.6	3.2	2.5
32	0.30	18.9	12.6	9.5	8.9	6.3	5.4	4.7	3.8
35	0.40	25.2	16.8	12.6	11.9	8.4	7.2	6.3	5.0
38	0.50	31.6	21.0	15.8	14.9	10.5	9.0	7.9	6.3
41	0.60	37.9	25.2	18.9	17.8	12.6	10.8	9.5	7.6
44	0.70	44.2	29.5	22.1	20.8	14.7	12.6	11.0	8.8
47	0.80	50.5	33.7	25.2	23.8	16.8	14.4	12.6	10.1
60	1.00	63.1	42.1	31.6	29.7	21.0	18.0	15.8	12.6
65	1.20	75.7	50.5	37.9	35.6	25.2	21.6	18.9	15.1
85	1.50	94.7	63.1	47.3	44.6	31.6	27.0	23.7	18.9

VeriFlow 2

Reference Pressure PSI	Flow Rate Per Outlet GPM	US Gallons / Acre @ 5 MPH							
		Based on Fertilizer							
		6"	7"	8"	9"	10"	12"	14"	20"
15	0.07	11.8	10.1	8.8	7.9	7.1	5.9	5.0	3.5
20	0.09	15.1	13.0	11.4	10.1	9.1	7.6	6.5	4.5
25	0.10	16.8	14.4	12.6	11.2	10.1	8.4	7.2	5.0
30	0.13	21.9	18.8	16.4	14.6	13.1	10.9	9.4	6.6
35	0.22	37.0	31.7	27.8	24.7	22.2	18.5	15.9	11.1
40	0.38	64.0	54.8	48.0	42.6	38.4	32.0	27.4	19.2
45	0.30	50.5	43.3	37.9	33.7	30.3	25.2	21.6	15.1
50	0.43	72.4	62.0	54.3	48.2	43.4	36.2	31.0	21.7
55	0.47	79.1	67.8	59.3	52.7	47.5	39.6	33.9	23.7
60	0.52	87.5	75.0	65.6	58.3	52.5	43.8	37.5	26.3